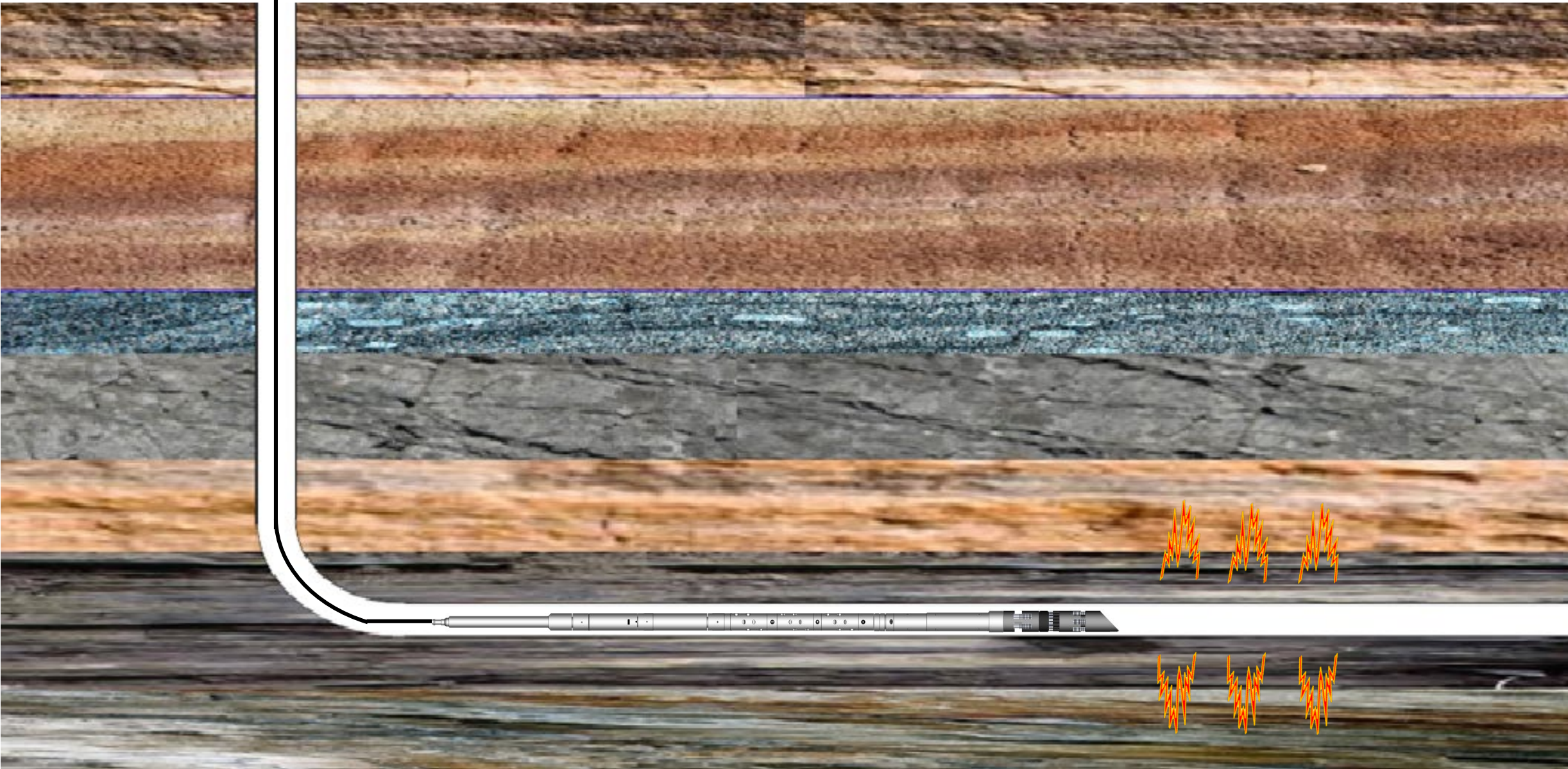


Plug and Perforation Process on Wireline



Perforating Components



Gun Barrel



Detonator



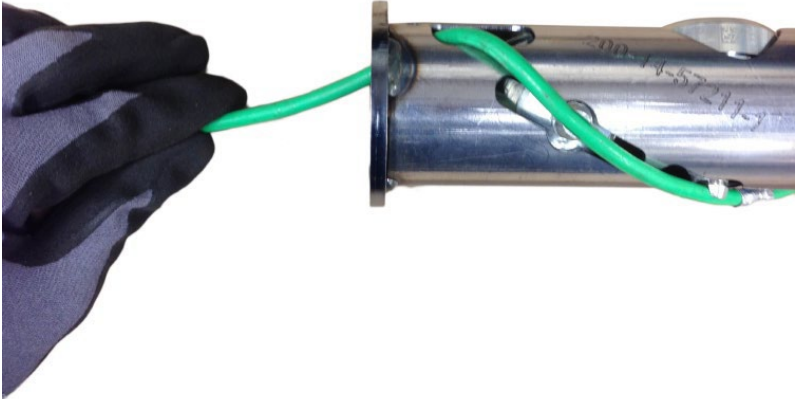
Shaped Charge



Loading Tube



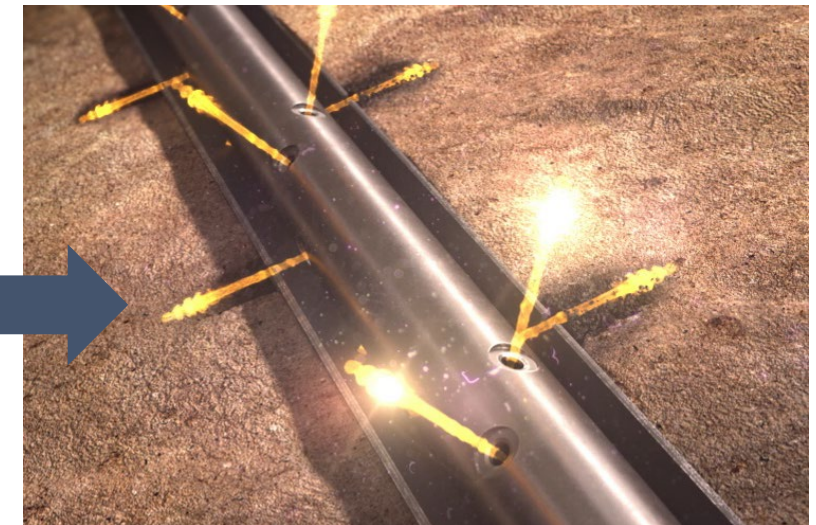
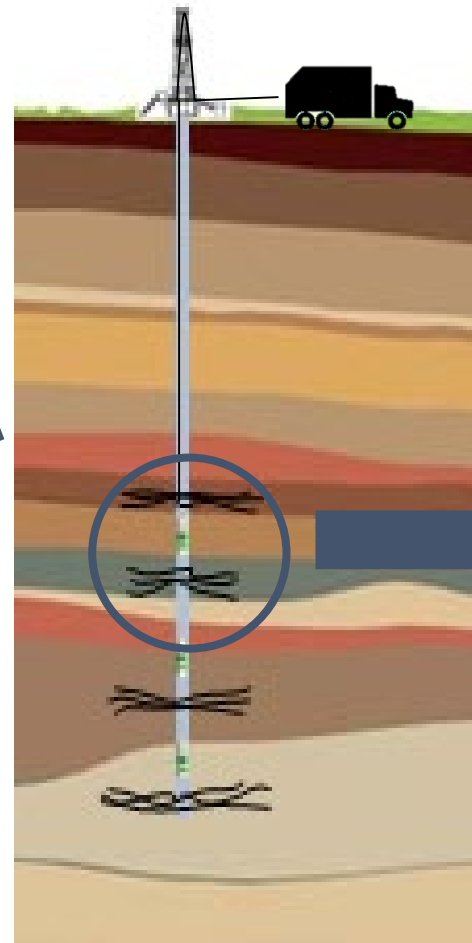
Detonating Cord



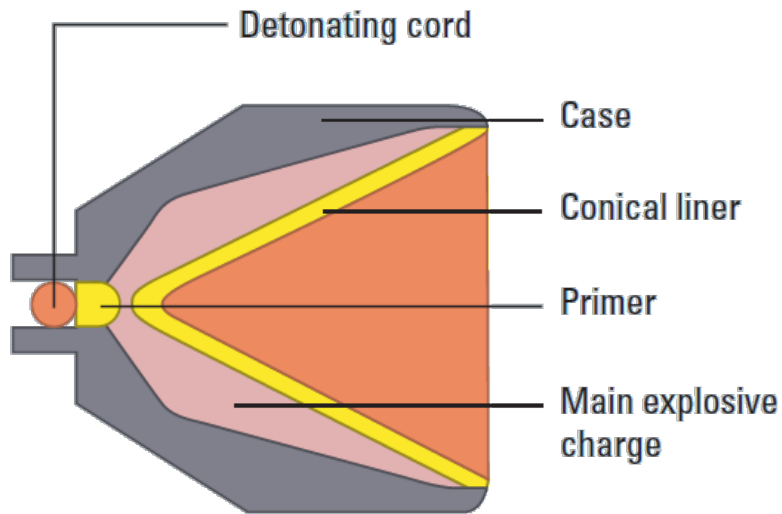
Perforating Process



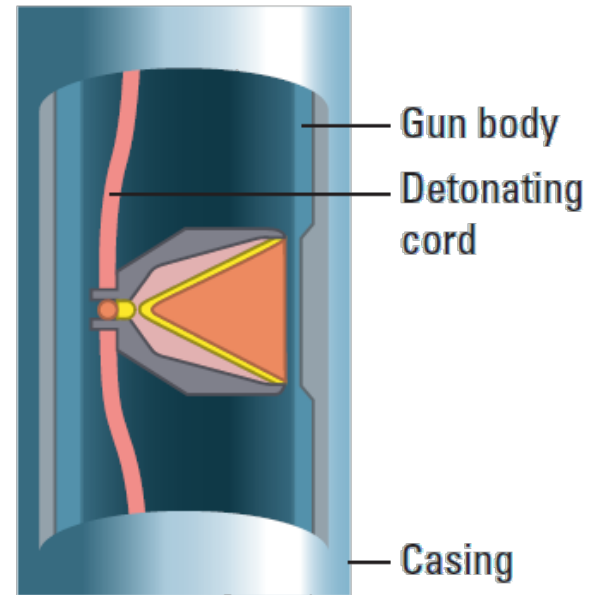
- Wireline supervisor initiates the detonator by sending an electric signal from the wireline unit on surface
- The signal goes down the wireline and sets off the detonator
- The detonator ignites the detonator cord
- The detonator cord burns past the shaped charge causing them to explode



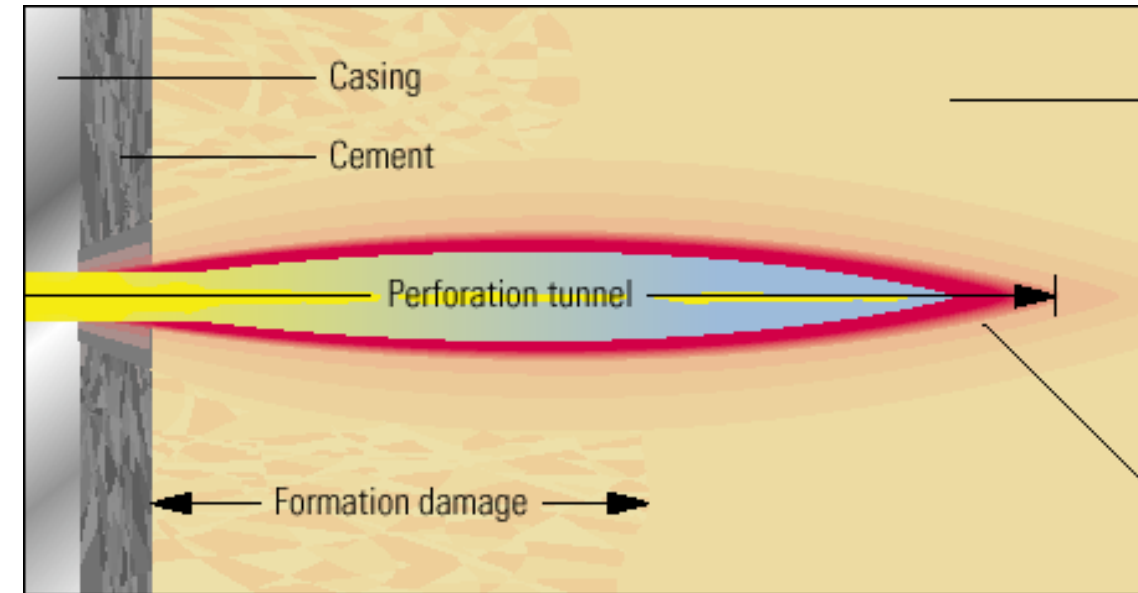
Perforating Shaped Charge



■ Shaped Charge side view internal components



■ Shaped Charge inside a gun barrel



■ Explosion of a shaped charge and the perforation tunnel it creates

Perforating Gun Assembly

